



**INDIAN SCHOOL SOHAR**  
**TERM- I EXAM (2023 – 24)**  
**SUBJECT: EVS**  
**CLASS- III**

**SET –B**

**Date of Exam: 19-09-2023**

**Time Allotted: 2 hours**

**Max. Marks: 40**

**(Note: This question paper consists of 6 printed pages. Please check that you have all the pages.)**

**Name:** \_\_\_\_\_

**Roll No:** \_\_\_\_\_

**Section:** \_\_\_\_\_

**GR No:** \_\_\_\_\_

**Subject Teacher's Sign with date**

**Invigilator's Sign with date**

**Q1. Choose and write the correct option in the given space:**

**(1 × 5=5)**

i. Which part of the potato plant is used as food?

A) Flower

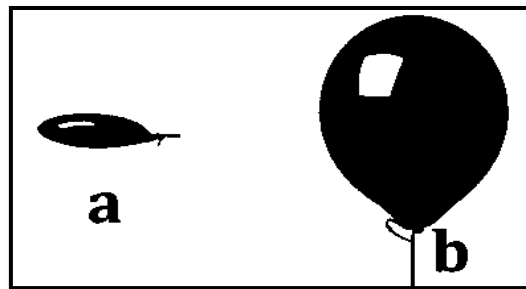
B) Root

C) Stem

D) Leaf

i. Answer: \_\_\_\_\_

ii. Identify the organ system in our body that changes the balloon from 'a' to 'b'.



ii. Answer: \_\_\_\_\_

A) Digestive system

B) Skeletal system

C) Circulatory system

D) Breathing system

iii. Select the correct match between a bird and its nesting place.

A) Penguin – on ground

B) Tailor bird – in tree trunk

C) Weaver bird – on tall tree

D) Vulture – hangs down from the branch

iii. Answer: \_\_\_\_\_

iv. Complete the following:

Draught animal: Horse : : Milch animal : \_\_\_\_\_

A) Cow

B) Camel

C) Donkey

D) Ox

iv. Answer: \_\_\_\_\_

v. Four children made the following statements about the eating habit of the earthworm.

Whose statement is **True**?

A) Tina: It chews the grass.

B) Kiran: It catches insects with its sticky tongue.

C) Raj: It bites and tears the flesh of other animals.

D) Lily: It swallows the dead plants and animals from the soil.

v. Answer: \_\_\_\_\_

**Q2. There are two statements marked as Assertion (A) and Reason (R). Choose the correct answer as per the options provided below and write the correct option for the following:**

(1 × 2=2)

A) Both A and R are true, and R is the correct explanation of A.

B) Both A and R are true, and R is the not the correct explanation of A.

C) A is true but R is false.

D) A is false but R is true.

i. **Assertion (A):** Blind people use braille to read and write.

**Reason(R):** It is a script that has letters of raised dots on paper.

Ans: \_\_\_\_\_

ii. **Assertion (A):** Sheep and goats are herbivores.

**Reason(R):** They eat only the flesh of other animals.

Ans: \_\_\_\_\_

**Q3. Answer the following in one word:**

(1 × 2=2)

i. Birds that can walk through muddy water are called \_\_\_\_\_

ii. The pigment which is present in the green leaves of the plants \_\_\_\_\_

**Q4. Fill in the blanks:**

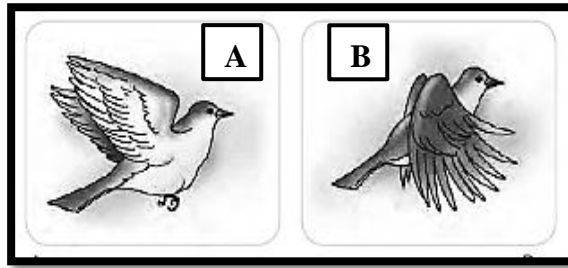
( $\frac{1}{2} \times 2 = 1$ )

- i. The \_\_\_\_\_ carry blood to different parts of our body.
- ii. The hardest substance in the human body is \_\_\_\_\_.

**Q5. Answer the following in one or two sentences:**

( $2 \times 6 = 12$ )

- i. Observe the given picture and answer the following question:  
Describe the type of movements shown by the birds.



A \_\_\_\_\_  
\_\_\_\_\_

B \_\_\_\_\_  
\_\_\_\_\_

- ii. Doctor advices us to drink glucose when we feel tired. Give reason

\_\_\_\_\_  
\_\_\_\_\_

- iii. Define the terms:

a. Cells \_\_\_\_\_  
\_\_\_\_\_  
\_\_\_\_\_

b. Germination \_\_\_\_\_  
\_\_\_\_\_  
\_\_\_\_\_

iv. Give one difference between the following animals based on its feeding part.

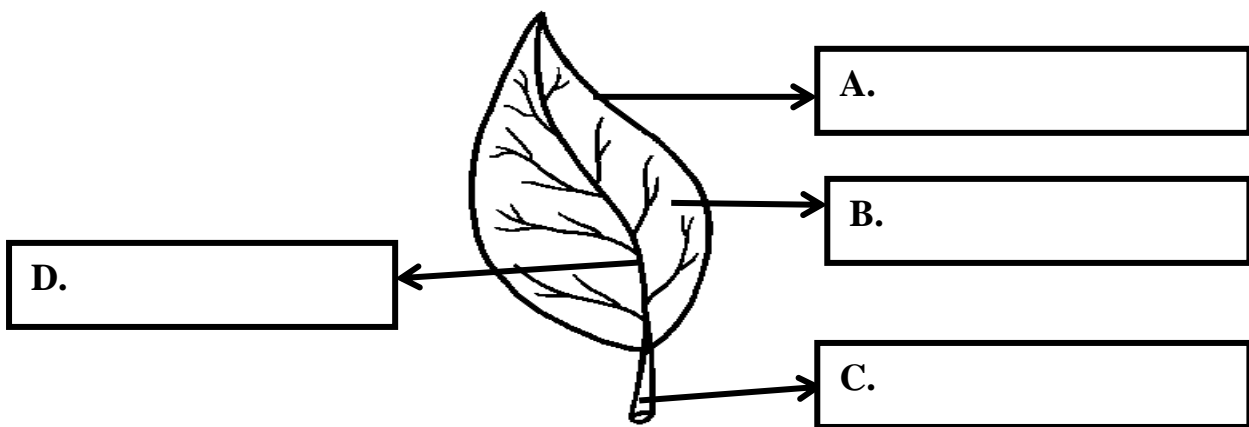
S. No	Cat	Elephant
1.		

v. Give two examples for each of the following:

a. Flesh eating birds \_\_\_\_\_ , \_\_\_\_\_

b. Fruits with many seed \_\_\_\_\_ , \_\_\_\_\_

vi. Label the parts (A, B, C and D) of the leaf structure:



**Q6. Answer the following:**

**(3 × 4=12)**

i. How do the following parts help these birds?

a. Long and slender beak of a hoopoe \_\_\_\_\_

\_\_\_\_\_

b. Talons of an owl \_\_\_\_\_

\_\_\_\_\_

c. Back toe of a crow \_\_\_\_\_

\_\_\_\_\_

ii. Name the organ that can be protected in the given cases-

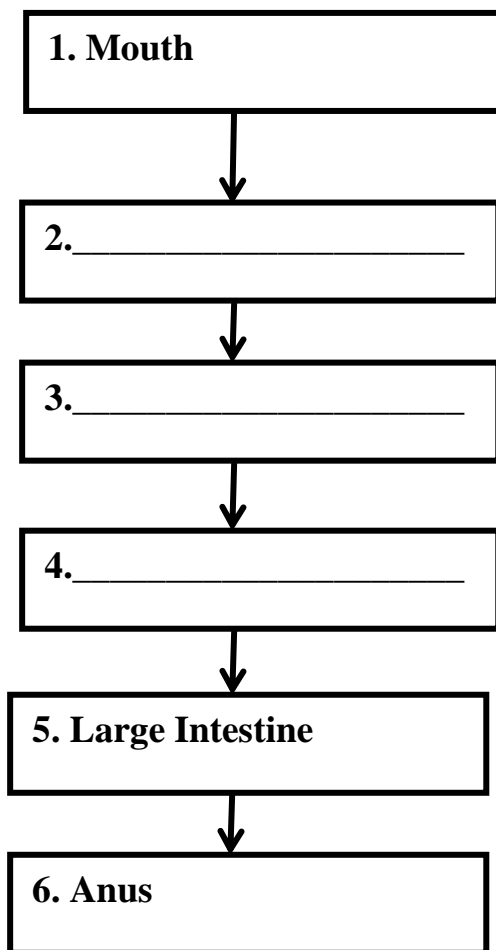
a. Wearing helmet while riding a bicycle \_\_\_\_\_

b. Wearing goggles while swimming \_\_\_\_\_

c. Staying well-hydrated by drinking water every day \_\_\_\_\_

iii. When you eat an apple it passes, through different organs of your digestive system.

Fill the order of organs (2, 3 and 4) through which it will pass when you eat.



iv. Draw a neat labelled diagram to show the **movements of water and food in stem.**



**Q7. Read the passages given below and answer the following questions: (3 × 2=6)**

i. Every living thing needs food to survive. Plants prepare their own food whereas animals- some eat animals flesh, others eat only plant-based foods, and then there are some animals that eat both.

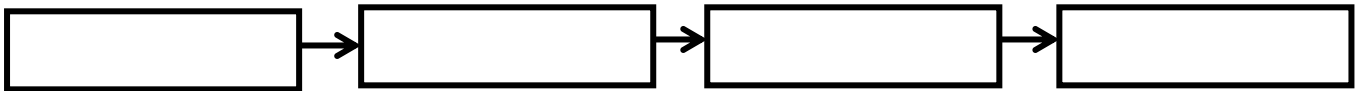
a. How are herbivores different from carnivores?

---

---

---

b. Give an example of a food chain.



ii. Our body is an amazing machine. It consists of many parts and systems that work together to perform our body functions. We have five different sense organs and they are all controlled by brain.

a. Complete the table of organ systems:

<b>Organ System</b>	<b>Organ</b>	<b>Function (Only one)</b>
Excretory System	Skin	<hr/> <hr/>
Skeletal System	Bone	<hr/> <hr/>

b. Name the gases that we breathe in and out.

Breathe in \_\_\_\_\_

Breathe out \_\_\_\_\_

\*\*\*\*\*